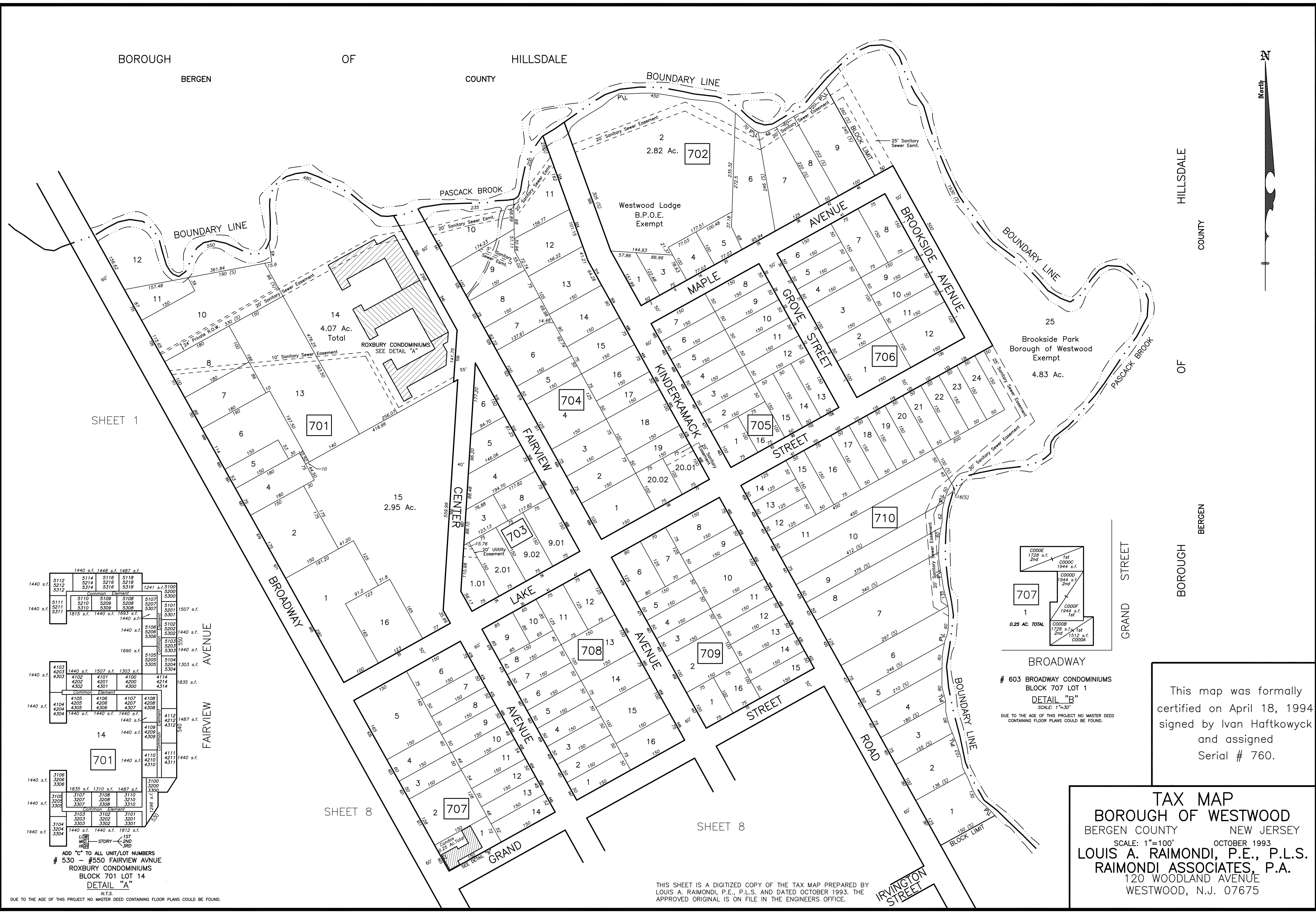


BOROUGH OF HILLSDALE  
BERGEN COUNTY



SHEET 1

701

704

705

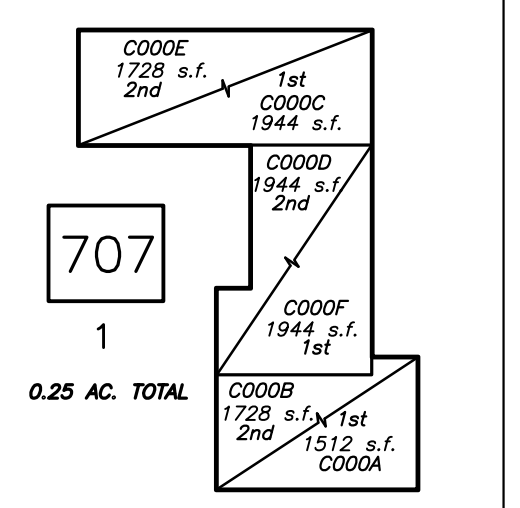
710

703

708

709

707



# 603 BROADWAY CONDOMINIUMS  
BLOCK 707 LOT 1  
DETAIL "B"  
SCALE: 1"=30'  
DUE TO THE AGE OF THIS PROJECT NO MASTER DEED  
CONTAINING FLOOR PLANS COULD BE FOUND.

This map was formally certified on April 18, 1994 signed by Ivan Haftkowsky and assigned Serial # 760.

**TAX MAP**  
BOROUGH OF WESTWOOD  
BERGEN COUNTY NEW JERSEY  
SCALE: 1"=100' OCTOBER 1993  
**LOUIS A. RAIMONDI, P.E., P.L.S.**  
**RAIMONDI ASSOCIATES, P.A.**  
120 WOODLAND AVENUE  
WESTWOOD, N.J. 07675

1440 s.f.	5112	5114	5116	5118	5120	5122	5212	5214	5216	5218	5312	1241 s.f.	5100	5200
Common Element														
1440 s.f.	5111	5110	5109	5108	5107	5211	5210	5209	5208	5207	5311	1507 s.f.	5101	5201
1440 s.f.	5311	5310	5309	5308	5307	5108	5208	5308	5307	5306	5305	1440 s.f.	5102	5202
Common Element														
1440 s.f.	5108	5208	5308	5307	5306	5108	5208	5308	5307	5306	5305	1440 s.f.	5103	5203
1690 s.f.	5105	5205	5305	5304	5303	5104	5204	5304	5303	5302	5301	1440 s.f.	5104	5204
1440 s.f.	4103	4203	4303	4102	4202	4302	4101	4201	4301	4100	4200	4300	4114	4214
Common Element														
1440 s.f.	4104	4204	4304	4105	4205	4305	4106	4206	4306	4107	4207	4307	4108	4208
1440 s.f.	4304	4204	4104	4105	4205	4305	4106	4206	4306	4107	4207	4307	4108	4208
1440 s.f.	4109	4209	4309	4110	4210	4310	4111	4211	4311	4112	4212	4312	1487 s.f.	4112
Common Element														
1440 s.f.	3106	3206	3306	3107	3207	3307	3108	3208	3308	3109	3209	3309	1440 s.f.	3100
Common Element														
1440 s.f.	3104	3204	3304	3103	3203	3303	3102	3202	3302	3101	3201	3301	1440 s.f.	3100
Common Element														
1440 s.f.	3104	3204	3304	3103	3203	3303	3102	3202	3302	3101	3201	3301	1440 s.f.	3100

ADD "C" TO ALL UNIT/LOT NUMBERS  
# 530 - #550 FAIRVIEW AVENUE  
ROXBURY CONDOMINIUMS  
BLOCK 701 LOT 14  
DETAIL "A"

N.T.S.  
DUE TO THE AGE OF THIS PROJECT NO MASTER DEED CONTAINING FLOOR PLANS COULD BE FOUND.

THIS SHEET IS A DIGITIZED COPY OF THE TAX MAP PREPARED BY LOUIS A. RAIMONDI, P.E., P.L.S. AND DATED OCTOBER 1993. THE APPROVED ORIGINAL IS ON FILE IN THE ENGINEERS' OFFICE.